



# Savannah

4 Bedroom | 3.5 Bath



# MILLVILLE BY THE SEA

www.MillvilleByTheSea.com

## Outstanding Features At No Extra Cost

### Luxury Designer Interiors

- Dramatic First Floor Nine Foot Ceilings
- Interior Lighting Package
- Spacious Walk-In Closets
- Telephone Pre-Wiring with Cat 5 wiring
- Cable Pre-Wiring w/Phone Capabilities For Satellite Systems
- Plush Carpet
- Six Panel Colonial Doors

### Magnificent Kitchens

- Beautifully Crafted 30" Wall Cabinets in Wide Choice of Colors
- GE 18.2 cu ft Refrigerator
- GE 30" Electric Range
- GE 30" Hood
- GE 5 Cycle Dishwasher
- WilsonArt Laminate Countertops
- Laundry Area
- Garbage Disposal

### Sumptuous Baths

- All Full Baths Feature Elegant White Vanities with Faux Marble Tops and Designer Lighting
- Choice of Vinyl Flooring
- All Baths Sound Insulated
- Chrome Faucets
- Second Bath has 1 Piece Fiberglass Easy to Clean Tub/Shower
- Elegant Pedestal Sink and Mirror in Formal Powder Room

### Special Utility Features

- Public Water
- Public Sewer
- Underground Electric, Telephone and Optional LP Gas
- 200 AMP Electrical Service

### Exterior Features

- Color Coordinated Exteriors - Beaded Siding with Shake Siding Accents
- Concrete Front Porches

- Asphalt Driveway and Concrete Entry Walks
- Cottage Style Exterior Facades
- Two Car Garage (some models)
- Frost Proof Exterior Faucet
- THERMA TRU Front Door
- Seamless Gutters and Downspouts with Splash Blocks
- Exterior GFI Outlet
- Low Maintenance Soffit and Fascia
- Low Maintenance Exterior Lights

### Extreme Energy Efficient Features

- R-13 Fiberglass Wall Insulation
- R-30 BATT Ceiling Insulation
- R-19 Floor Insulation
- Double Hung, Tilt-In Thermal Pane Windows with Screens
- Therma-Pane Rear Sliding Glass Door
- 50 Gallon Quick-Recovery Water Heater
- Cost Efficient Heat Pump with Central Air Conditioning
- PVC Plumbing
- Smoke Detectors with Battery Backups
- GFI Safety Electrical Outlets Exterior, Bath and Kitchen

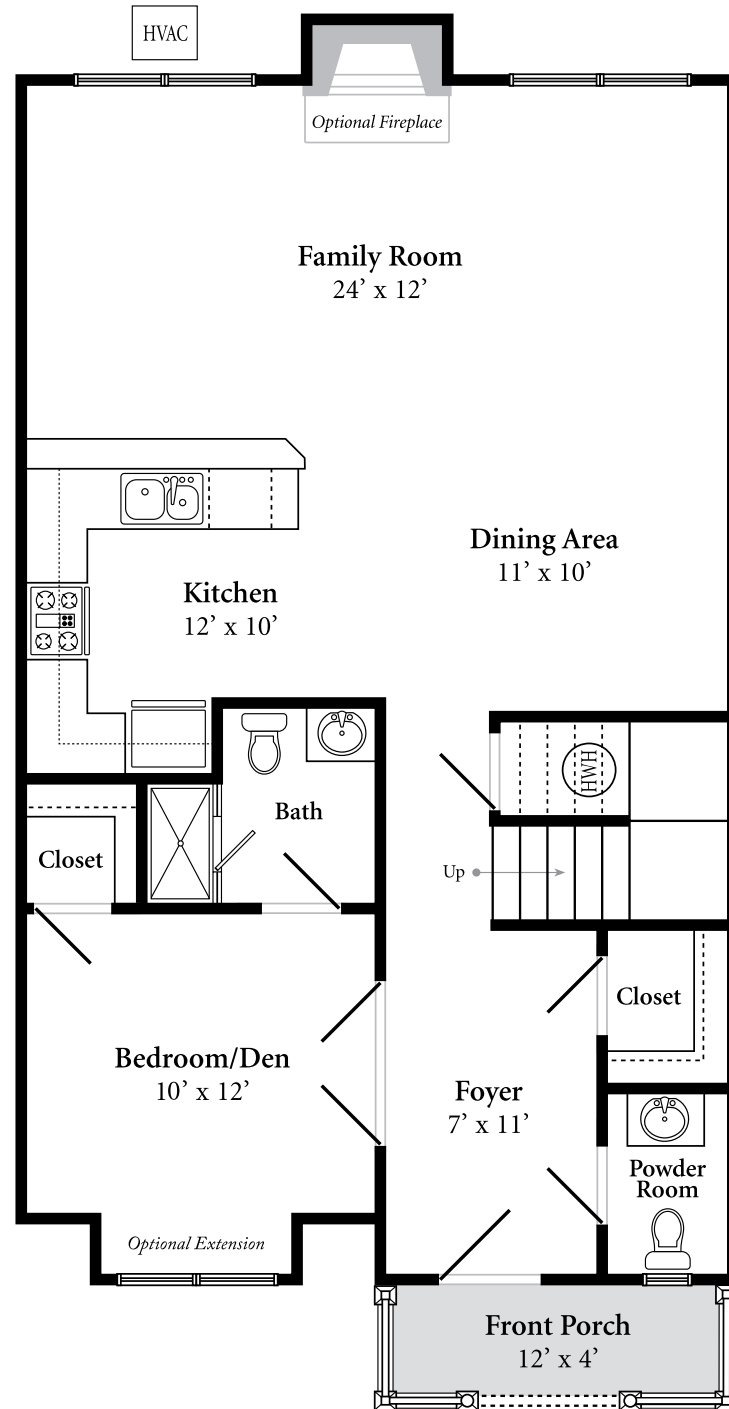
### Landscaping

- Street trees, Sidewalk and Street Lights
- Sodded Front Yards
- Seeded Side and Rear Yards
- Professionally Designed Landscaping Package
- Townhomes include Low Maintenance Lifestyle

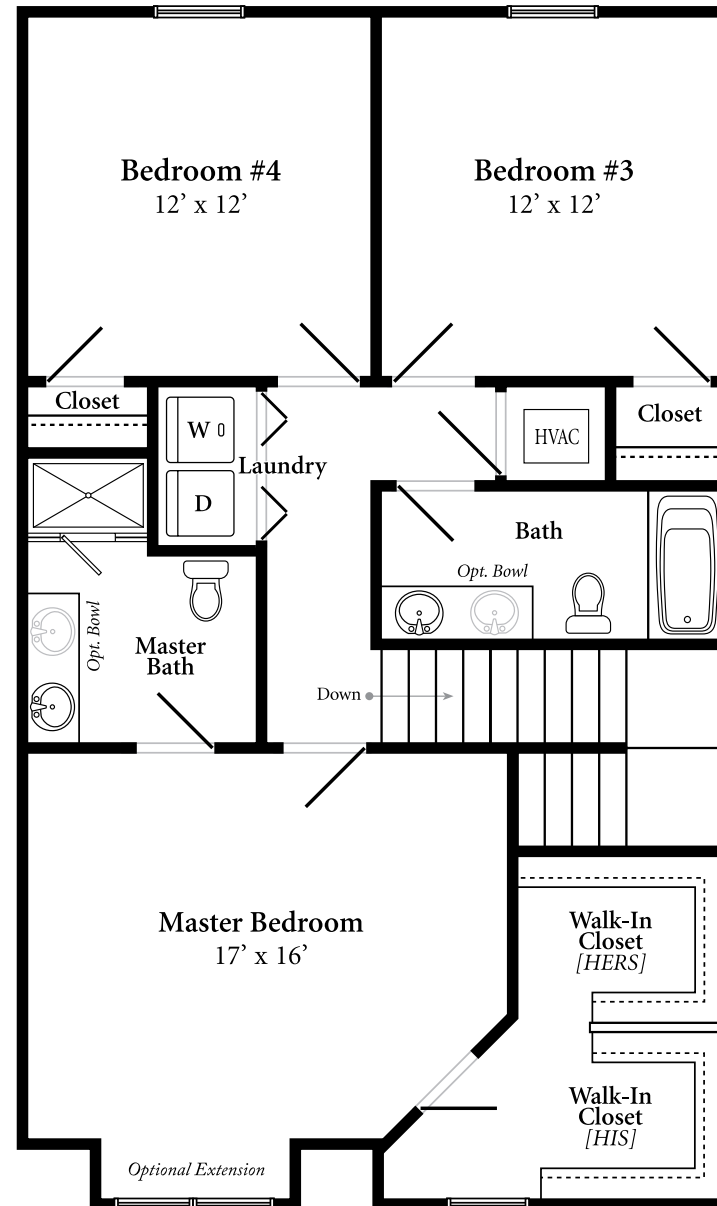
### Customizing Service

Pre-priced options permit a full range of additional customizing to fit your particular needs: multiple flooring choices, sprinkler systems, sunrooms, entertainment built-ins and more...

...Your home is only limited by your imagination



First Floor



Second Floor

## Savannah 4 Bedroom | 3.5 Bath

All dimensions are approximate and may not be drawn to scale. Builder reserves the right to make modifications depicted without notice. Renderings are an artist's representation for illustrative purposes only.

